

Vision:

Working together to be the best we can possibly be

Ravensdale Primary School



Values:



Transparency



Pro-active



Development



Stewardship



Trust



Child Centred

Priorities:



Quality First Teaching with a focus on differentiation and challenge



Improving the progress of vulnerable groups across the school



Assessment for Learning with a focus on quality of medium term planning

EYFS
GLD

Year 1
Phonics

Year 2
Progress Stats

Year 4
Progress
Attainment

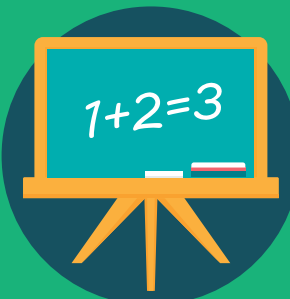
Year 6
Progress Stats
Attainment

Mathematics
Progress
above National

Safeguarding
Culture of
vigilance

Right to Learn, Right to Respect, Right to feel & be safe

Diminish the differences between boys and girls.
Enhance outdoor area
Ensure GLD remains above National.



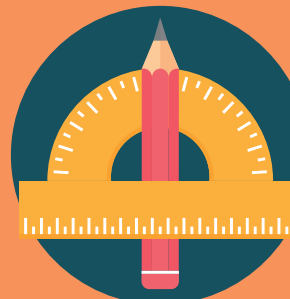
Maintain phonics upward trajectory (% above national)
Books demonstrate high expectations and planning reflects Year 1 curriculum from outset.
Vulnerable groups (including able) make at least good progress.



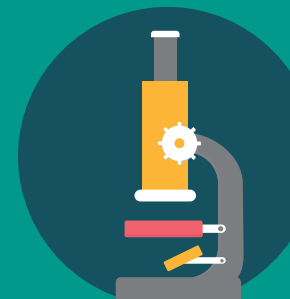
% of cdn at or above ARE is at national or better.
Vulnerable groups (including able) make at least good progress.



Vulnerable groups (including able) make at least good progress.
Ensure key mathematical objectives are embedded - % of children reaching all Key Objectives.
Mental strategies appropriate for year 4 are applied in greater % of children.



Maths SATS attainment and progress rises: progress above zero and attainment at or above national.
All SATS attainment above national.



Ensure key mathematical objectives are embedded.

Hot tasks show mastery, with written reasoning in at least half of tasks in years 2 to 6.

Fluency scheme with key facts and number bonds launched and embedded.



Online review tool to be RAG rated green in all areas.
Train new staff in KCSIE and CPOMS and school policies.

